

# SMD LVDS VCXO - Differential Output 5.0 x 3.2 x 1.2 mm CN Series

Think of Frequency Think of **TXC**  
come visit our site <http://www.txccorp.com>



## Features

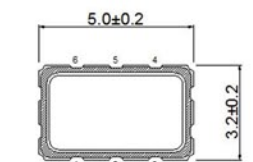
- Voltage Controlled Crystal Oscillator (VCXO).
- Fundamental solution.
- LVDS output, output frequencies 50 MHz to 200 MHz.
- Wide pull range and good linearity.
- Low phase noise, low jitter.
- Tri-State function available.
- Applications : SDH / SONET, Ethernet, Base Stations.
- RoHS Compliant / Pb Free.

## Electrical Specifications

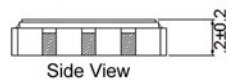
| Item / Type                                    | CN   |
|--|--|
| Output Type                                    | LVDS   |
| Output Load                                    | 100 $\Omega$   |
| Oscillation Mode                               | Fundamental  |
| Supply Voltage (VDD)                           | 3.3 V  |
| Frequency Range                                | 50 ~ 200 MHz   |
| Operating Temperature Range                    | - 10 ~ + 70 $^{\circ}\text{C}$ , - 40 ~ + 85 $^{\circ}\text{C}$ , or specify |
| Storage Temperature Range                      | - 55 ~ + 125 $^{\circ}\text{C}$  |
| Voltage Vol(Min.) / Voh(Max.)                  | 0.9 V / 1.6 V  |
| Rise ( Tr ) / Fall ( Tf ) Time ( 20 % ~ 80 % ) | 1 nS Max.  |
| Supply Current                                 | 80 mA  |
| Symmetry                                       | 45 ~ 55 %  |
| Start-up Time                                  | 10 mS Max.   |
| Absolute Pulling Range ( APR ) *               | $\pm$ 50 ppm Min. , or specify   |
| Nominal Control Voltage                        | 0.5 VDD  |
| Control Voltage Range                          | 0 ~ VDD  |
| Linearity                                      | 10 % Max.  |
| Phase Jitter ( 12 KHz ~ 20 MHz )               | 1 pS Max.  |

\* APR=(Pull Range) - (Frequency tolerance at 25  $^{\circ}\text{C}$ , variation over temperature, supply voltage variation, and aging.)

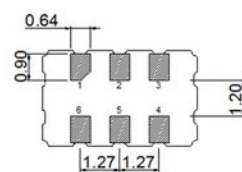
## Dimensions



Top View



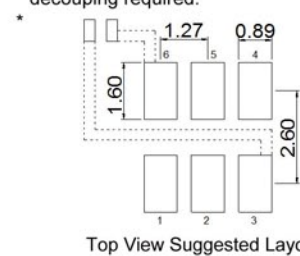
Side View



Bottom View

PAD FUNCTION:  
1: ENABLE CONTROL or NC  
2: ENABLE CONTROL or NC  
3: GND  
4: OUT  
5: OUTN  
6: VDD

\* :External high frequency power supply decoupling required.



Top View Suggested Layout

Units: mm